



Leeward Capital Corp.

Pistol Lake Property

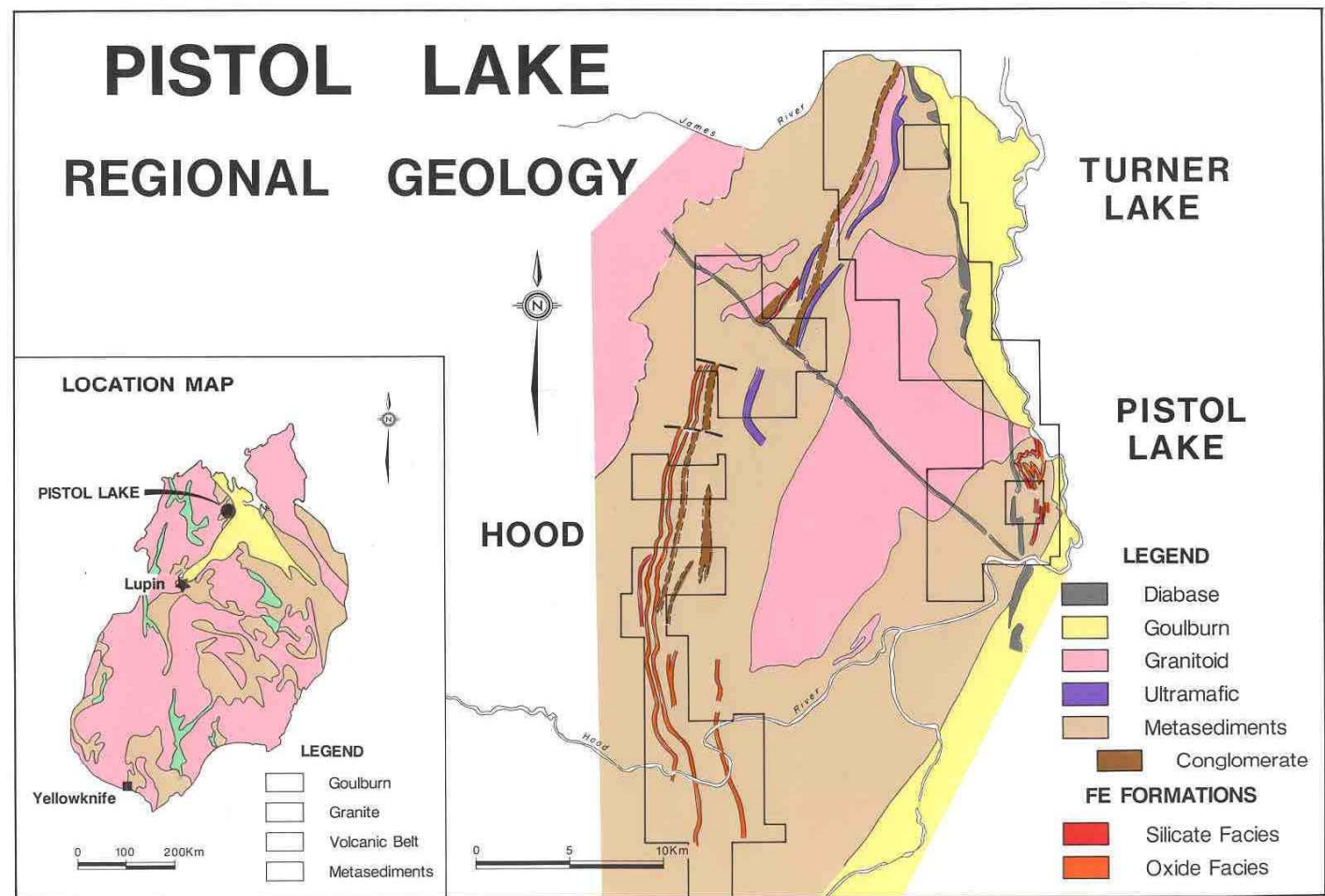
# Location

- This Gold Prospect Is In Nunavut
- Located 580 km NNW Of Yellowknife
- Proposed New Port is 30 km SSE
- Pistol Is Located 18 km West Of Bathurst Inlet
- Other Gold Deposits In Area Include The Hope Bay Gold Belt, George and Boot Lake
- Accessible Only By Aircraft Or Winter Road

# Pistol Lake Property History

- Discovered In 1964 By Roberts Mining
- Acquired By Silver Hart Mines 1984
- Optioned By Chevron Minerals 1988
- Acquired By Leeward In 1991
- Optioned To Qikiqtaaluk in 2000
- Taken to Lease By Leeward in 2001

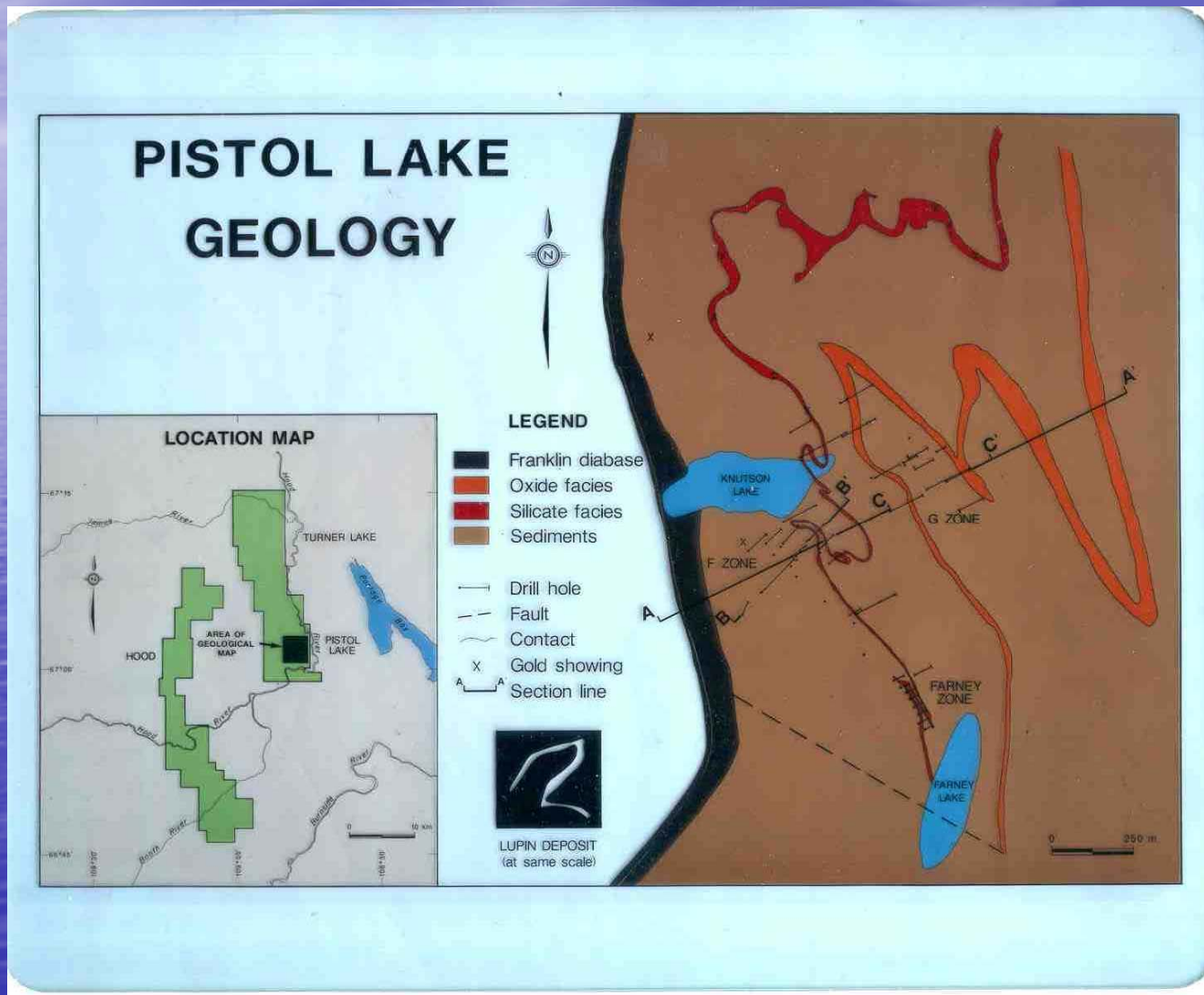
# Regional Location and Geology



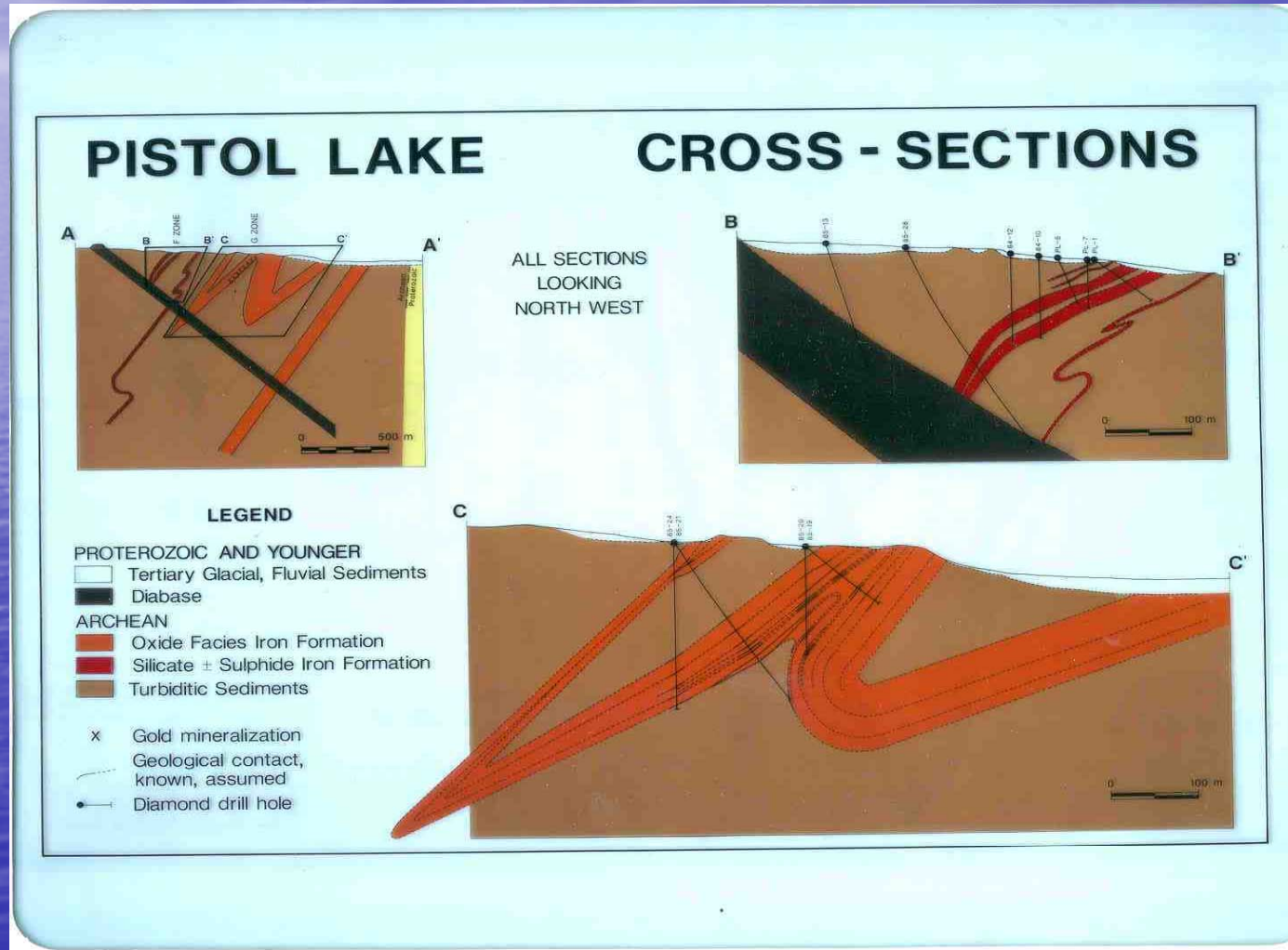
# Regional Geology

- Archean Yellowknife Group Rock Units
- Complexity Folded And Faulted
- Adjacent to the Bathurst Fault
- Property Underlain By Folded Metasediments including BIF
- Gold Hosted By Banded Iron Formation

# Local Geology

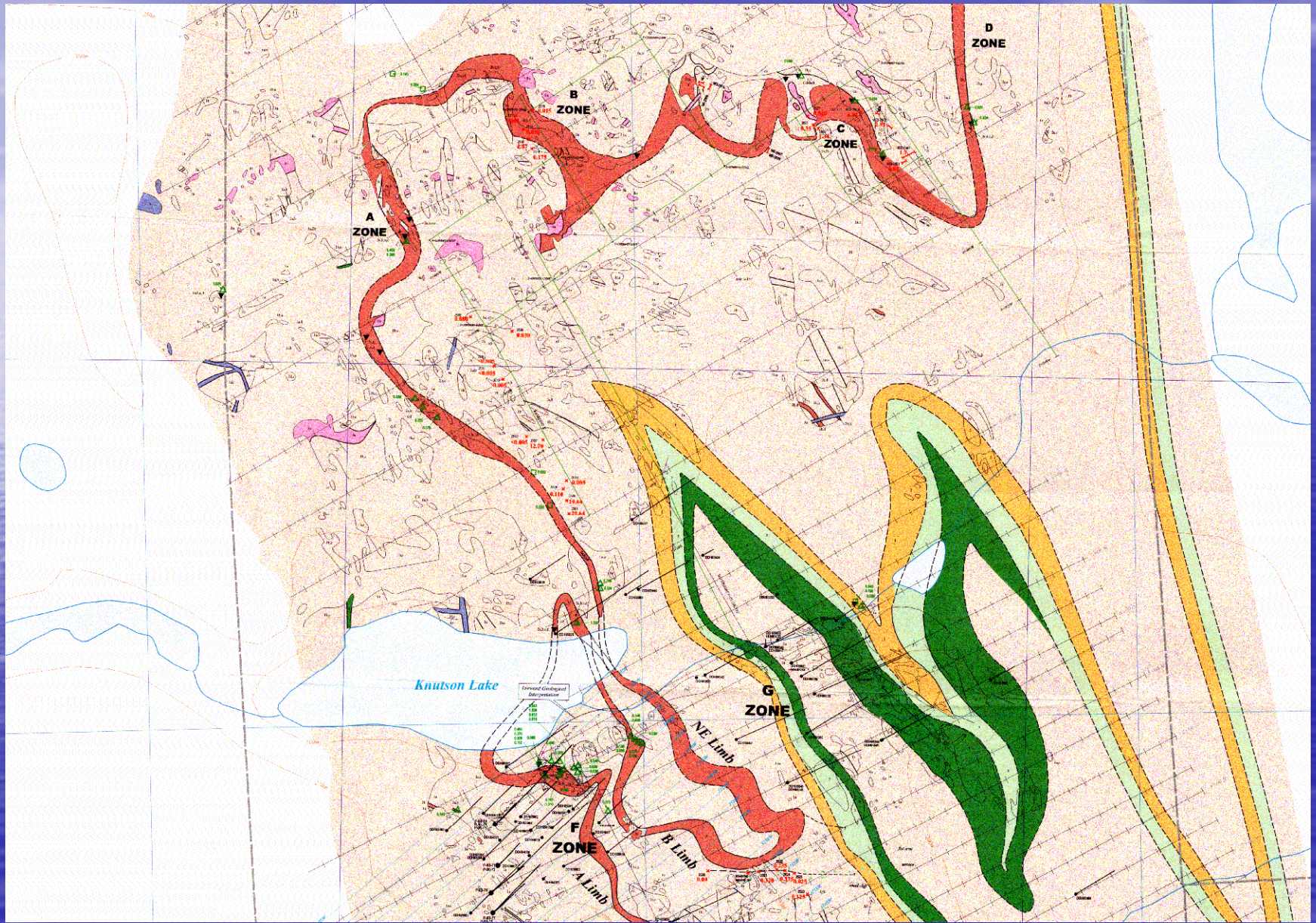


# Geological Cross-section



# Exploration Highlights

- Two Gold Zones Identified "G" & "F"
- Geophysical Surveys Completed
- Geological Mapping Completed
- Trenching And Geochemical Sampling
- 76 Diamond Drillholes Completed
- Reported Resource Of 580,000 Tons Grading 0.40 oz/tons

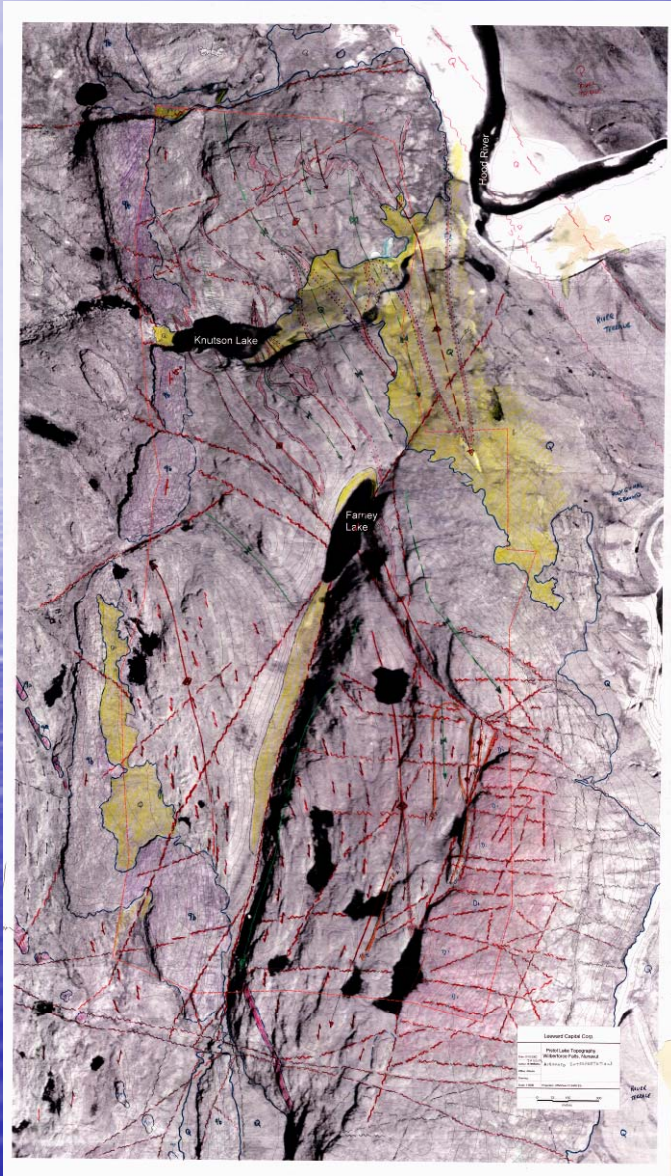


# Gold Bearing Iron Formation



- Banded Iron Formation
- Gold Hosted By Oxide and Sulfide Facies BIF
- Folded and Faulted
- Multiple Layered Gold Bearing BIF

# Exploration Potential



- Only Half Of The Property Explored In Detail
- Structural Mapping Required
- Addition Diamond Drilling Required To Define Thickened "Keel" Of The Deposit



Leeward Capital Corp.

TSX LWC